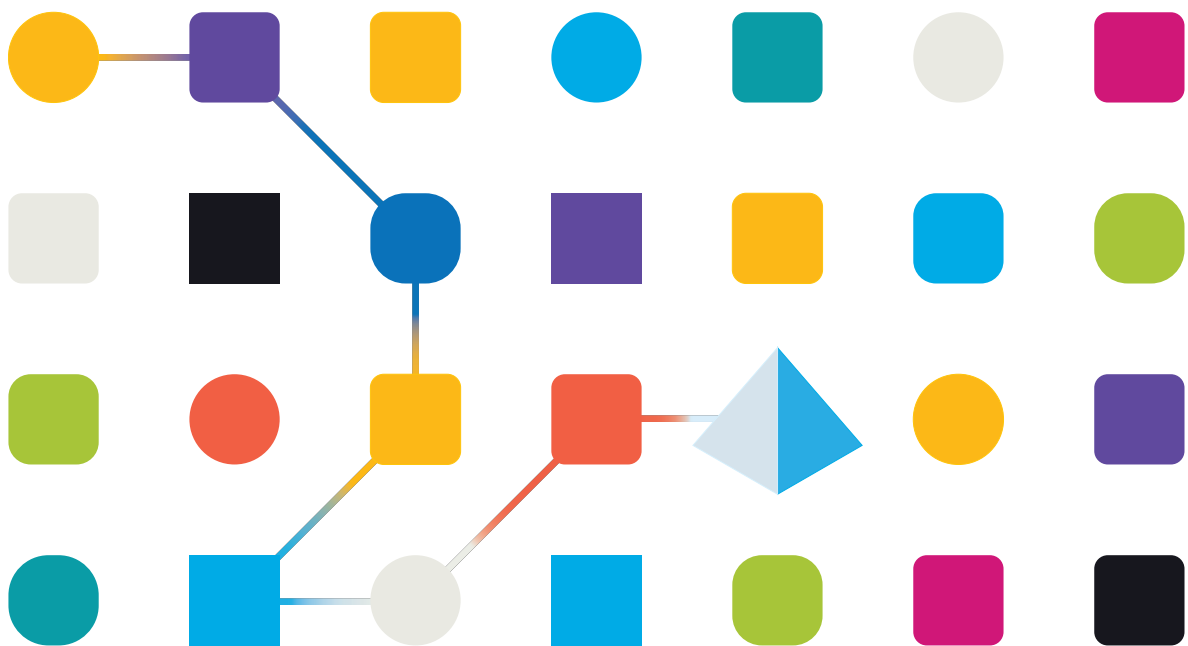




# Blue Prism Cloud EER4.3

## Release Notes

Document Revision: 1.0



## Trademarks and copyrights

The information contained in this guide is the proprietary and confidential information of Blue Prism Cloud Limited and/or its affiliates and should not be disclosed to a third-party without the written consent of an authorized Blue Prism representative. No part of this document may be reproduced or transmitted in any form or by any means, electronic or mechanical, including photocopying without the written permission of Blue Prism Cloud Limited or its affiliates.

© 2021 Blue Prism Cloud Limited. "Blue Prism", the "Blue Prism" logo and Prism device are either trademarks or registered trademarks of Blue Prism Limited and its affiliates. All Rights Reserved.

All other trademarks are hereby acknowledged and are used to the benefit of their respective owners.

Blue Prism Cloud Limited and its affiliates are not responsible for the content of external websites referenced by this help system.

Blue Prism Cloud Limited, 2 Cinnamon Park, Crab Lane, Warrington, WA2 0XP, United Kingdom.

Registered in England: Reg. No. 8534024. Tel: +44 870 879 3000. Web: [www.blueprism.com](http://www.blueprism.com)

Contents

Trademarks and copyrights ..... 2

Blue Prism Cloud EER4.3 – April 2020 ..... 4

    Release notes ..... 4

## Blue Prism Cloud EER4.3 – April 2020

Hub	1.23.6	The release requires the Hub to be this version.
-----	--------	--

This release note is for the Evolution Edition Release 4.3 of the Blue Prism Cloud Platform.

### Release notes

#### Enhancements

The following new features and enhancements are introduced in this version of Interact.

Description
<p>The new Automation Lifecycle Management (ALM) plugin has been made available with this version of Hub.</p> <p>The new plugin provides a framework to allow the following functionality area to be managed:</p> <ul style="list-style-type: none"><li>• Process Documentation</li><li>• Exception Tracking</li><li>• Automation Design and Development</li><li>• Process Sign-off and Approval</li></ul> <p>See <a href="#">Automation Lifecycle Management (ALM)</a> the Automation Lifecycle Management (ALM) user guide for more information.</p>